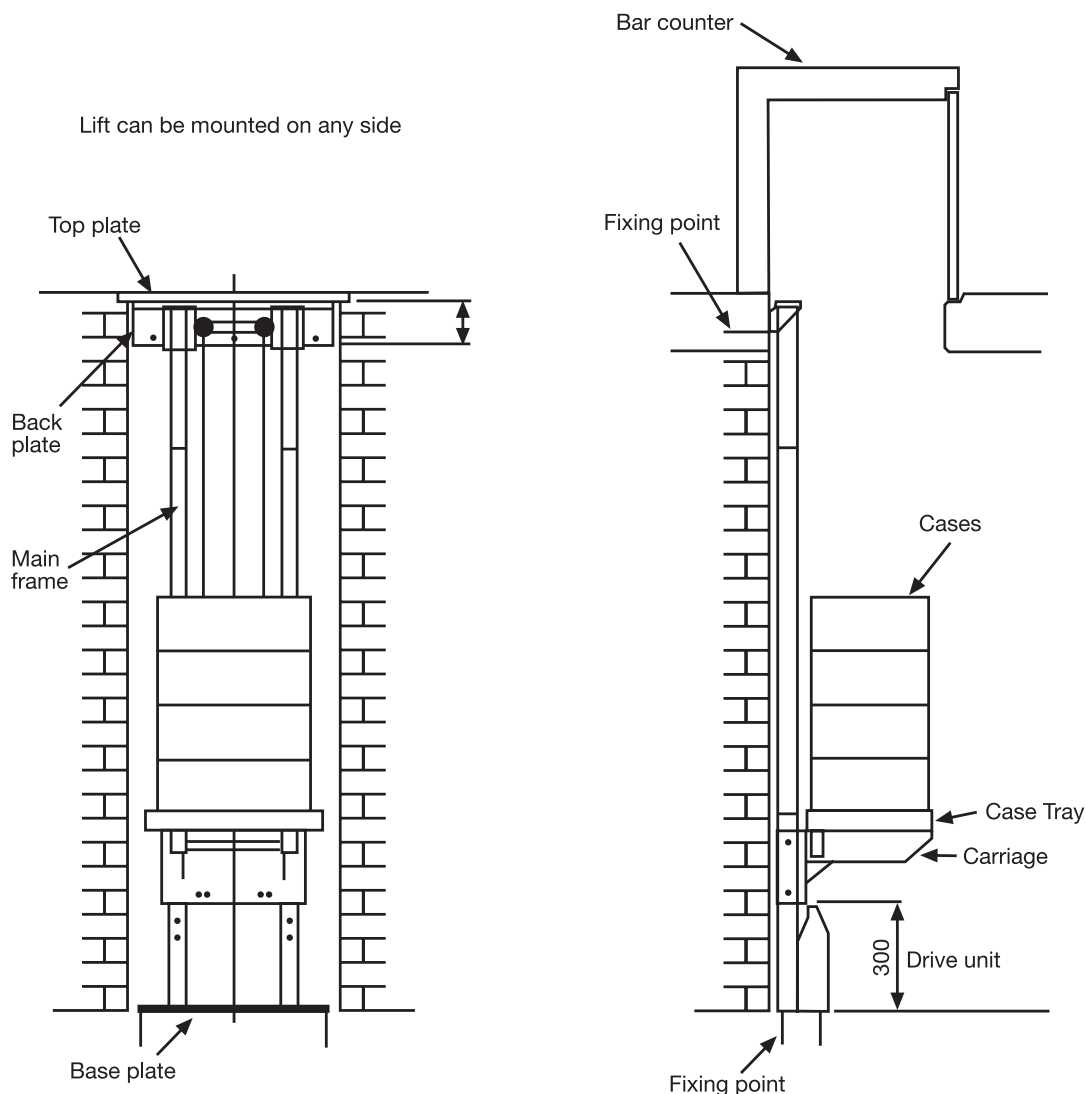


Single Stack Mini Chain



Recommended for small shaft sizes and limited head room.

-
- Ideally suited for positioning beneath a bar counter.
- Takes up minimal space.
- Maximum load 80Kgs
- Unique hold-to-run control handle.
- No pit required at lower level.

□
The height of the CellarLift once manufactured is not adjustable.

□
ELECTRIC SUPPLY - 20A, 240V, 1ph terminated in a double pole switch at lower level.

